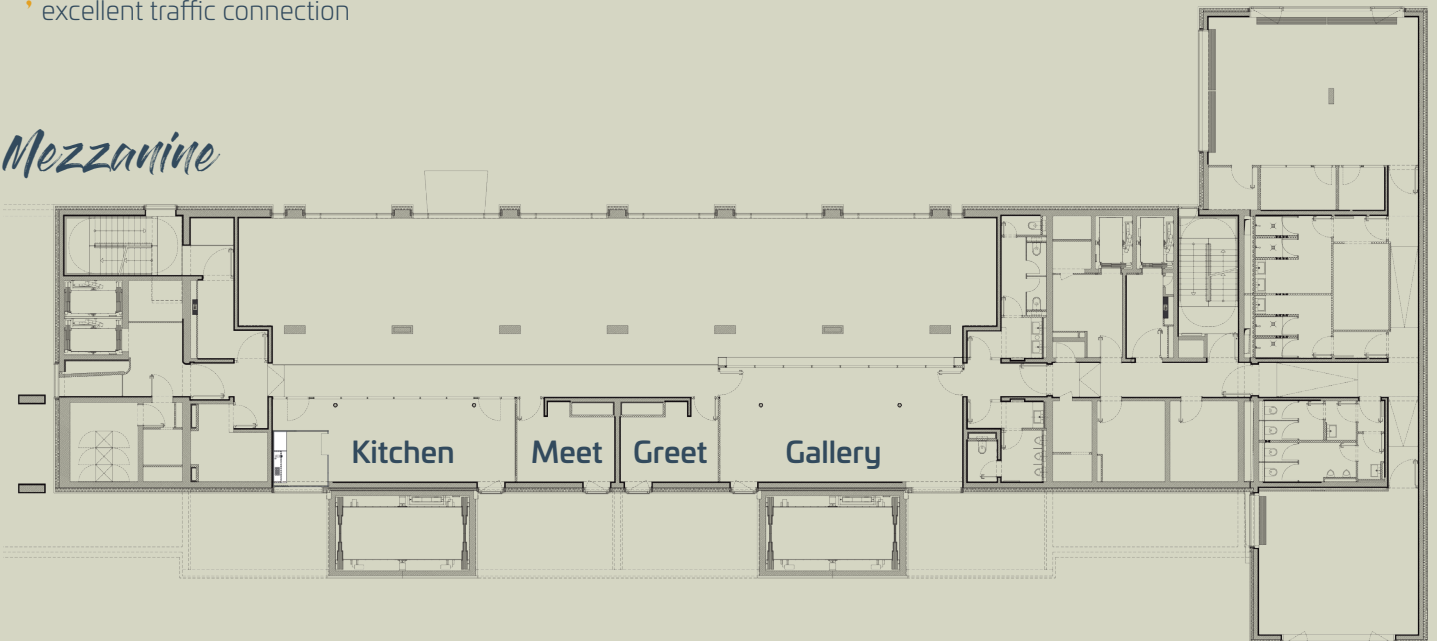










You can expect at the b'mine Frankfurt Airport:

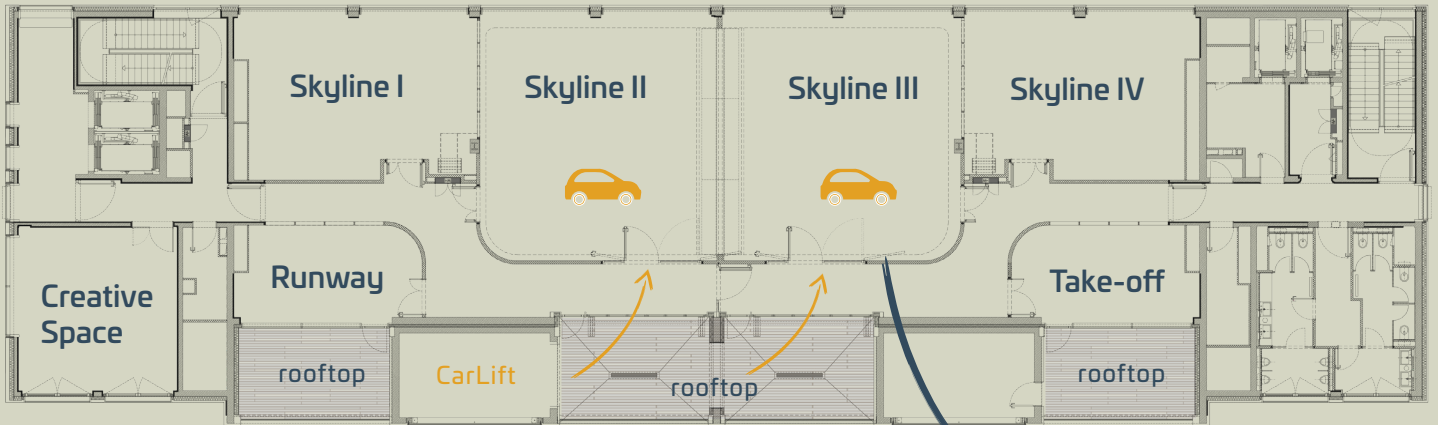
- 241 rooms including 40 CarLofts with e-charging stations on the CarLoggias and 1 SkyLoft on the top floor
- 12 light-flooded event rooms on the event floors (Mezzanine, 11th and 12th floor) with rooftop and CarLift connection
- THE ROOF - Restaurant, Bar & Lounge on the 12th floor with 1,830 ft² rooftops
- b'daily - Coffee Shop & Bistro
- Wellness & Fitness area including sauna, relaxation room and 2 treatment rooms
- digital experiences such as mobile room keys, online check-in & check-out
- underground car park with e-charging stations
- excellent traffic connection

Mezzanine



rooms	ft ²	height	 cocktail	 theatre	 classroom	 banquet	 u-shape	 conference
Kitchen	495	2.50	40	30	16	32	16	20
Meet	172	2.50						6
Greet	173	2.50						6
Gallery	678	2.50	50	40	18	24	18	24

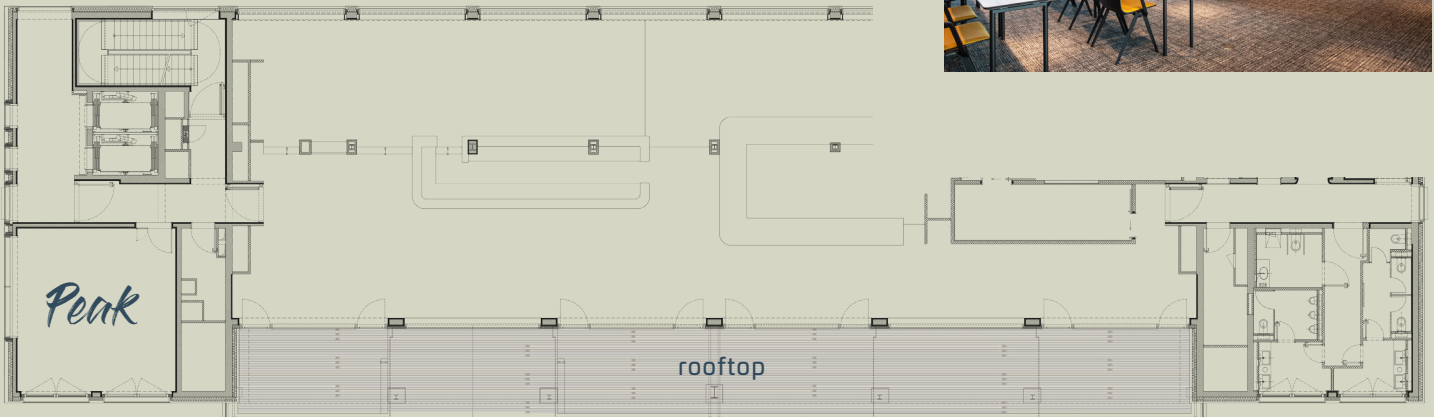
11. Floor



CarLift: width: 2.50 m | height: 2.20 m | depth: 5.57 m | ultimate load: 4 t
Entrance width: glass doors 2.92 m | wooden doors 1.36 m



12. Floor - The Roof



rooms	ft ²	height	cocktail	theatre	classroom	banquet	u-shape	conference
Creative Space	506	3.00	40	30	16	32	16	20
Runway	334	3.00						10
Skyline I	732	3.00	60	56	30	32	20	24
Skyline II	1,141	3.00	125	112	60	64	28	36
Skyline I+II	1,873	3.00	185		72	96		52
Skyline III	1,141	3.00	125	112	60	64	28	36
Skyline II+III	2,282	3.00	250	224	120	128	44	60
Skyline IV	710	3.00	60	56	30	32	20	24
Skyline III+IV	1,851	3.00	185		72	96		52
Skyline I+II+III+IV	3,724	3.00	370	250	144	192		
Take-off	336	3.00				14	12	14
Peak	506	3.00	40	30	16	32	16	20